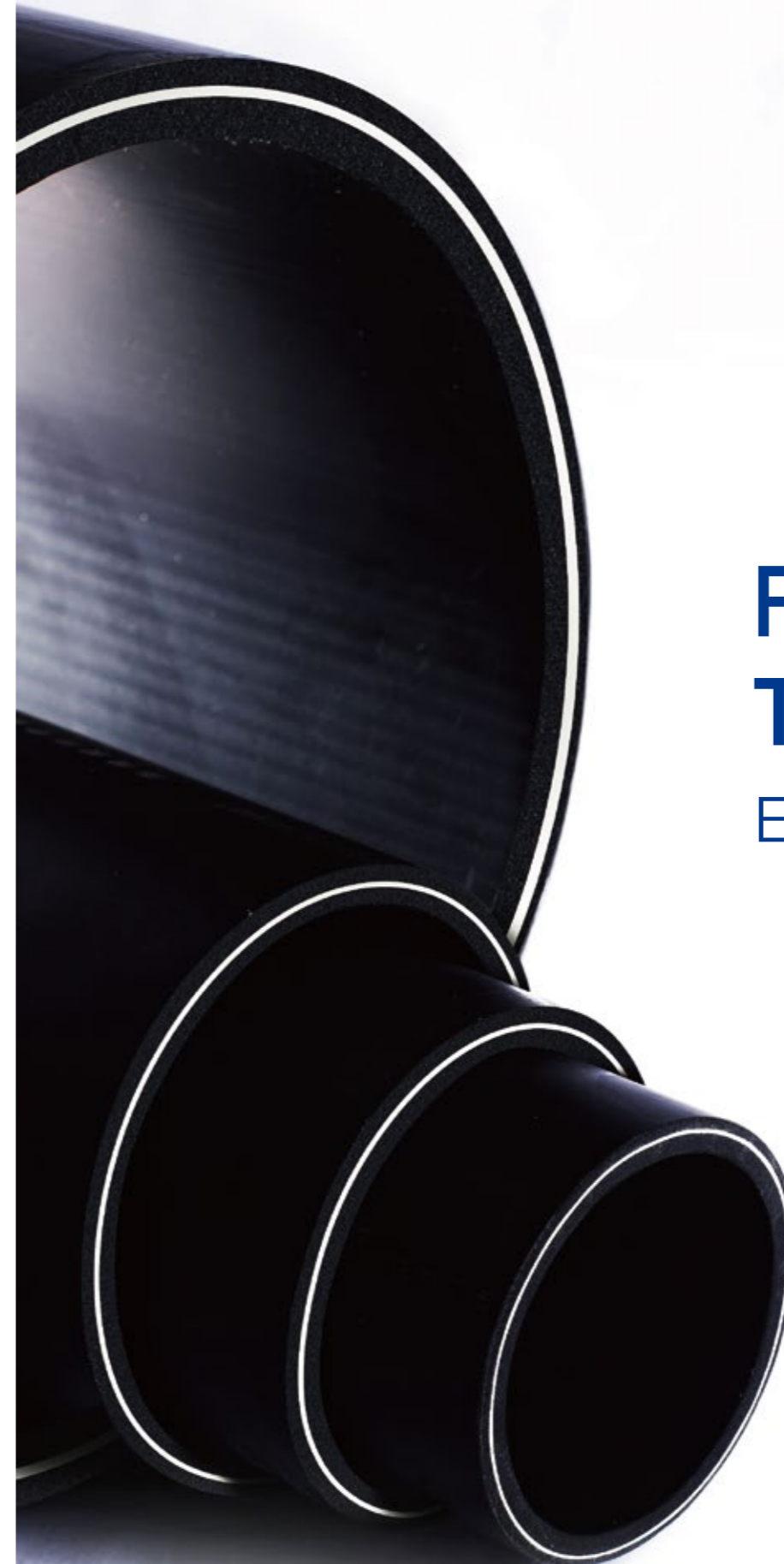
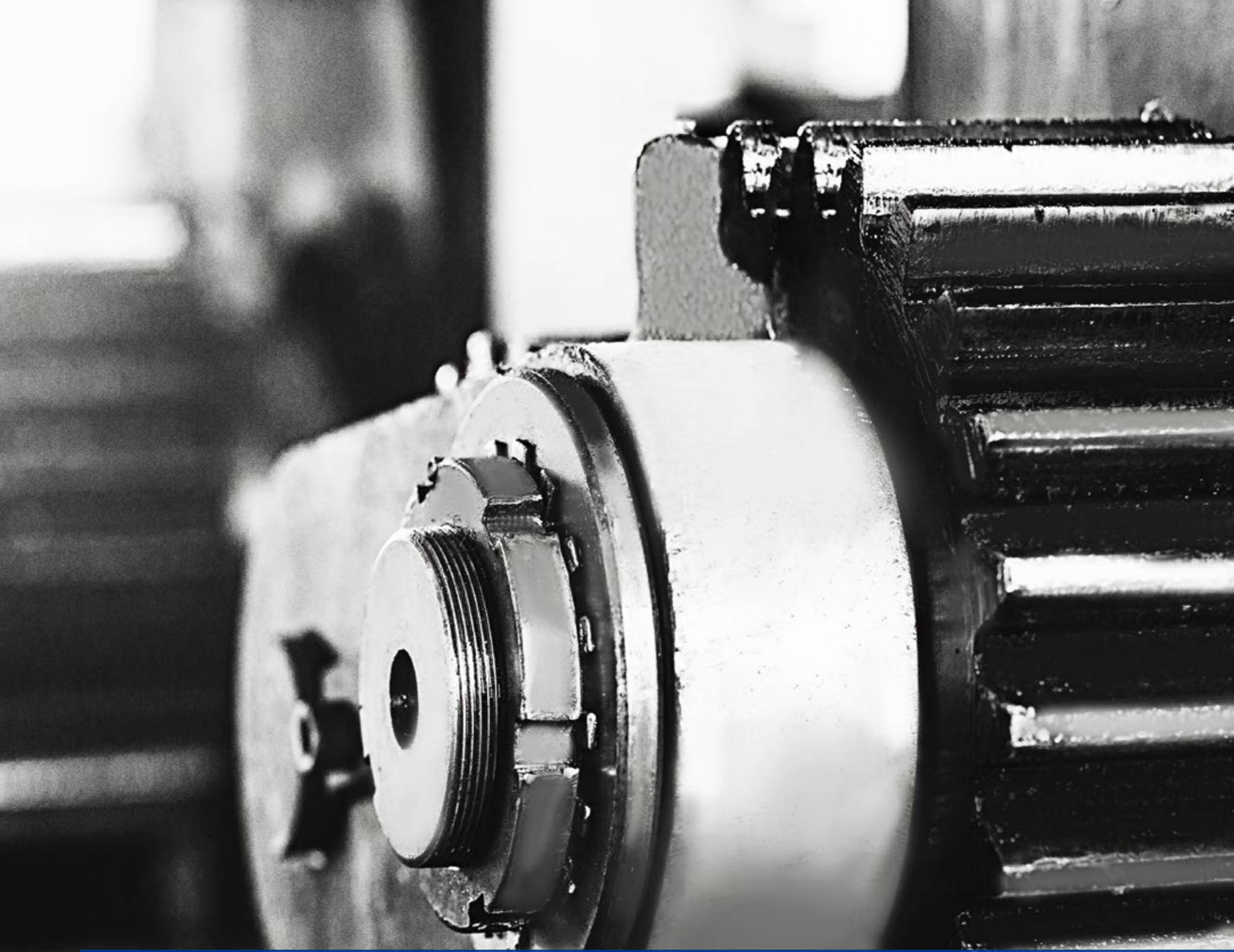


**Banline Machinery Equipment  
Co., Ltd**  
Building 1, No.189 Shanfeng Rd., Jinshan  
District, Shanghai, China  
(PC.201508)  
Tel : + 86 21 57249150  
Fax : + 86 21 57249150



# Fiberglass TCP/RTP

Extrusion Line



## Extrusion Line Designed for Your Project

# Innovator for Tomorrow's Industry

Shanghai Banline Machinery manufacture Co.,Ltd is focusing on developing the advanced solution of composite pipeline, and socialized in innovating, manufacturing, selling, and serving.

We always persuade quality and high standard of performance technical strength to establish long-term cooperation partnership with our global customers.

In order to provide reliable service, we have a senior professional service team , technical team, quality management team and after-sales team to ensure machine delivery and technique support.

It's important to put our faith on our customers, which means concentrate on a high-quality level with the competitive technology, do our best to meet customer needs and requirements.

The company maintains great relationships and look for the long-term corporation with customers, strive to build the world-wide extrusion machine manufacture enterprise. Banline believes and will always follow client centric responsive innovation all the time.

# CONTINUOUS FIBERGLASS RTP MACHINERY LINE

Banline Fiberglass RTP extrusion line is a business unit of the Banline machinery solutions. As specialists for fiberglass RTP technology, we have made it our task to develop technologies that ensure the success of our customers - by creating a distinctive leading edge when it comes to quality, flexibility and cost-effectiveness. To achieve this, we manufacture all of our core components in-house, and apply our know-how to machine technology and we enter into long-term collaboration with our customers and partners.

# Reliable Trustworthy Technology

There are good line features and very special line features, which upgrade a line significantly. The added value can be found at quality, reliability or raw-material consumption. There are the only features that we then refer to as reliable. It is a quality seal that stands for state-of-the-art technology. A quality seal that guarantees solutions that make a decisive difference on a highly competitive market.

# International Standard Accredited

API SPEC 15HR -2001

API SPEC 15LR -2001

API RP 15S : 2006, IDT

API SPEC 15S - 2016

ASTM D2992 - 2018

SY/T 6662.2 - 2012

SY/T 6794 - 2010

SY/T6266 - 2004

SY/T6267 - 2006

GB/T 29165

**Banline TCP  
Exclusive  
Partnership**

**LESSO 联塑**

Sold 16 complete machinery lines ( DN 50 ~ DN630 ) to Chinese Largest manufactures corporation LESSO group (Stock: HKG2128).

15

Continuous Fiberglass Reinforced Thermoplastic pipe (CFRTP)

20

Diameter Range

22

Fiberglass Tape

25

CFRTP Joining Solution

31

Extrusion Line Main Feature

# Table of Content



**Continuous Fiberglass Reinforced  
Thermoplastic Pipe (CFRTP)**



# CFRTP Extrusion Line

Diameter range : DN50~DN630

Our CFRTP line combines U.S. technology by using new fiber-glass tape wrapping method. We are the **1st and ONLY 1** can make reliable larger diameter (DN350~630) around the world.



**-50%**

Pipe weight

**Lighter weight**

The meter weight is 50% less than normal PE pipe, 12-inch pipe with 9 meters diameter can be picked up by one person very easily.

**-40%**

Overall costs

**Lower cost of pipe**

Under the same specification, CFRTP saves 20%-40% of overall pipe costs by comparing with polyethylene pipe, 15%-30% by comparing with steel wire reinforced PE pipe.

**HDPE or PERT**

**Materials**

**Materials for inner & outer layers**

PE 100+ for both  
or  
PERT for inner layer  
PE100+ for outer layer.



## 1 st

-By using brand new wrapping technology.

## 1 only

-Could make OD: DN 315 ~ DN630 all around the world.

## 12 MPa

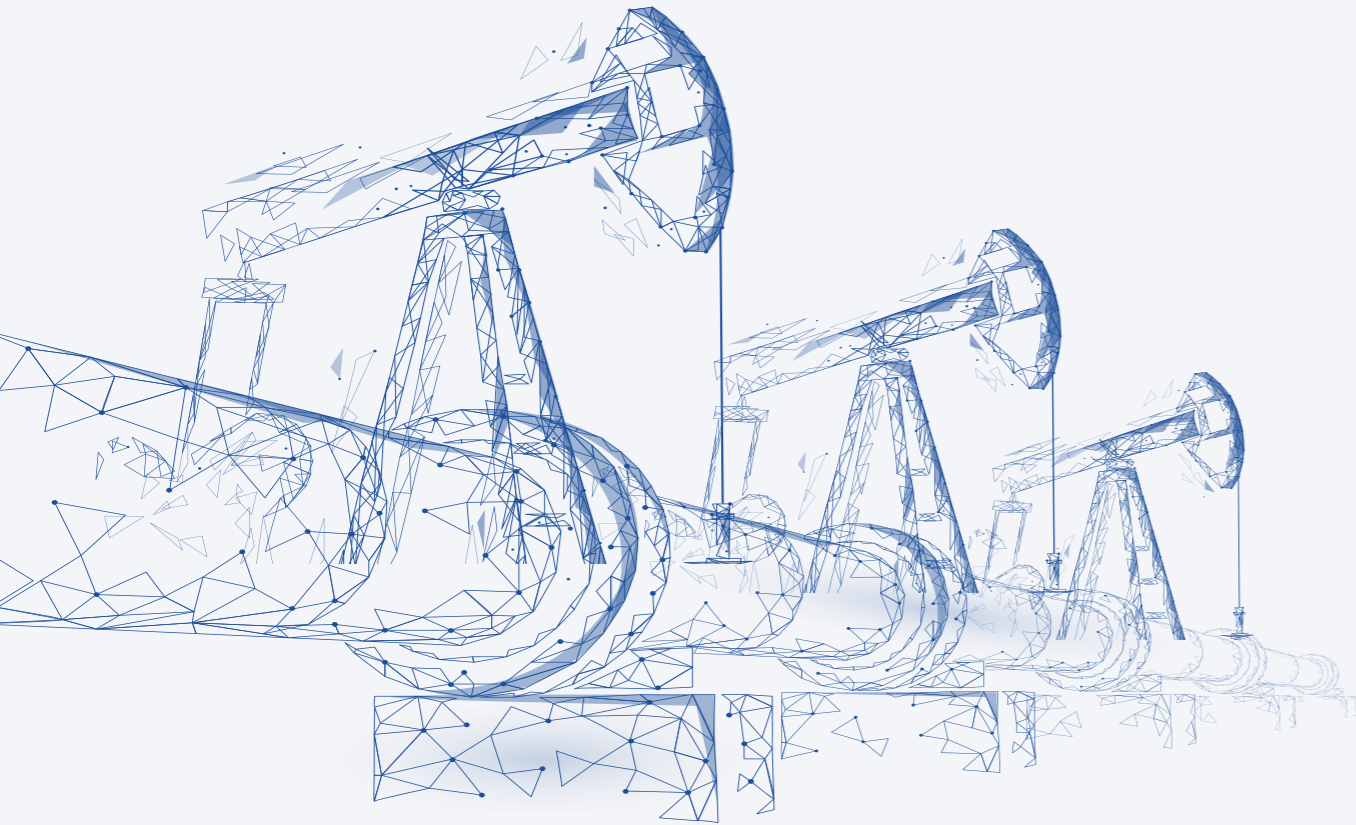
-Working pressure for lower diameter with high pressure.

## DN 125

-Coilable diameter.

# Diameter Range

For different projects



## Oil & Gas Small Diameter Higher Pressure

Production line model	BX/H-8
Pipe inside diameter (mm)	DN50 ~ 150
Working range (mm)	DN50 DN75 DN102 DN150
Working pressure (MPa)	3.67 - 30

## Water & Drainage & Sewage Transport Large Diameter with Lower Pressure

Production line model	BX/PE-B-160
Pipe outside diameter (mm)	DN50 ~ 160
Working range (mm)	DN50 DN63 DN75 DN90 DN110 DN160
Working pressure (MPa)	1.6 ~ 3.5

Production line model	BX/PE-B-315
Pipe outside diameter (mm)	DN200 ~ 315
Working range (mm)	DN200 DN250 DN315
Working pressure (MPa)	0.8 ~ 3.5

Production line model	BX/PE-B-630
Pipe outside diameter (mm)	DN400 ~ 630
Working range (mm)	DN400 DN500 DN630
Working pressure (MPa)	0.8 ~ 1.6



# Fiberglass Tape

We use our own produced fiberglass tape. Imported fiber-glass-impregnated technology, then improve it and apply to better used in different scenarios. Multiple times warp the pre-preg fiberglass tape to the inner layer, heating to complete fusion, Cooling, and curing, then do another cycle until it meets the demand of the stress.



**12,000 m**

Fiberglass tape length/roll is longer than smaller tape (2000 m/roll) to ensure continuous production possible

**5km**  
Production per tape

**360mm**  
Max width

**0.35 mm**  
Thickness

**Fiberglass tech**  
prepreged with PE -GF or PE-GF

**Continuous prduction**  
The fiberglass tape width covers 90mm~360mm.

**Thickness of fiberglass**  
Generally , the thickness of our fiberglass tape is 0.35mm, we could also design and adjust thickness for special requirement in order to save more costs for our customers.



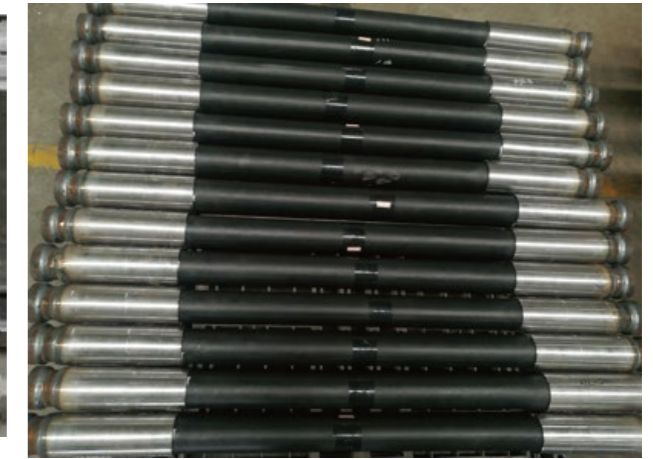
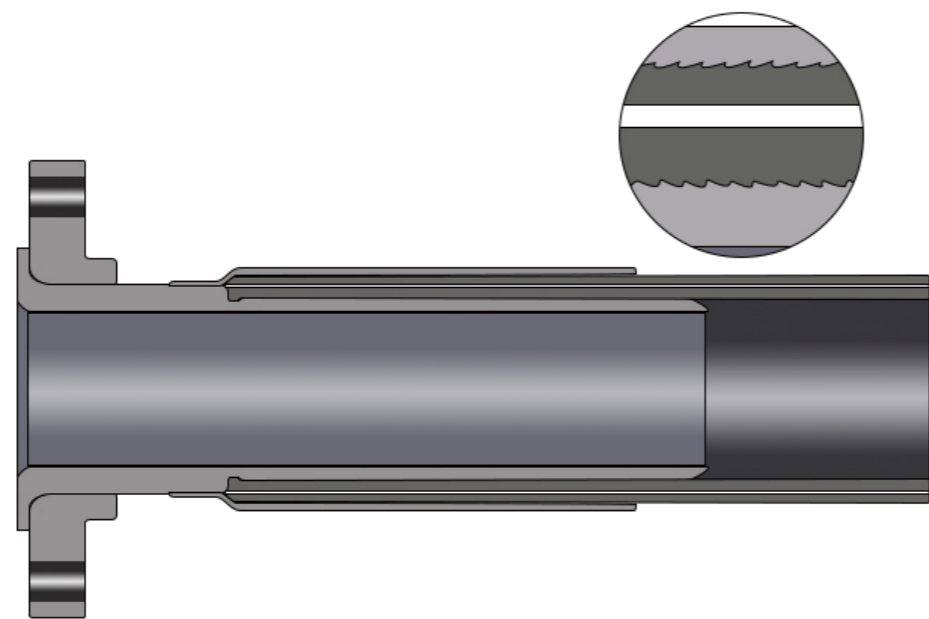


## CFRTP Joinging Solution

# CFRTP Joinging Solution

## Metallic Crimp-style Joining

For high pressure RTP pipe



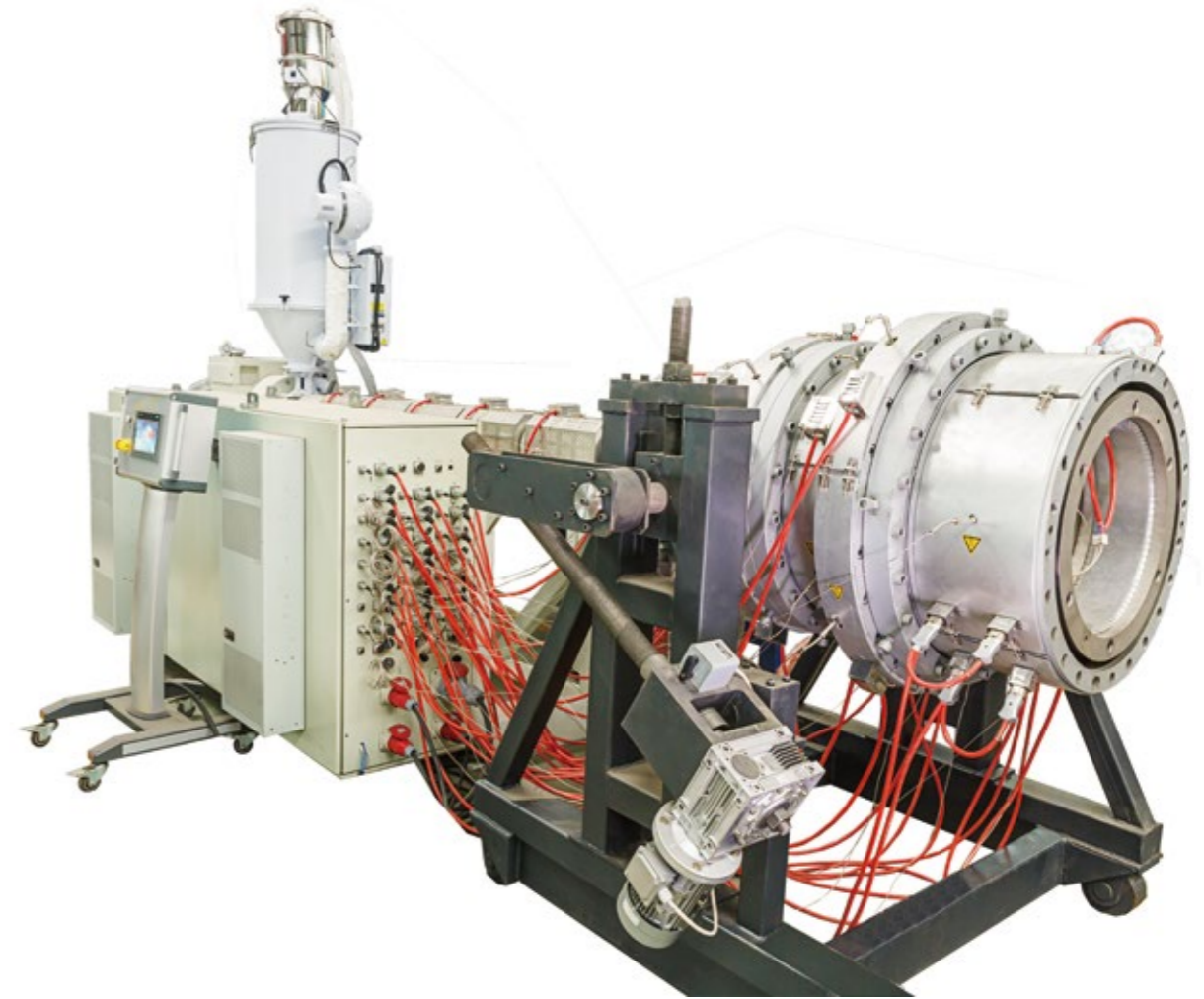


## Extrusion Line Main Feature

The entire machinery is around 180 m long.  
The length is vary based on different  
fiberglass-wrapping machine sets

# Single-Screw Extruder

To ensure high machine availability and the best price/performance ratio, we design all components to Banline standards.



## Key Features

38 L/D screw design.

Robust base frame.

High torque output gearbox.

Barrier screw design with special mixer.

Simatic multi-panel PLC control system.

Spiral grooved bush on the feeding zone.

Frequency changeable motor driven system.



# Vacuum Cooling Tank



## Automatic Matters

Automatic water level control.

Automatic water temperature control.

## Others

Double filter system.

With extra intensive cooling ring in the inlet.

Supporting roller adjustable outside.

## Spray Cooling Tank

Automatic water level control

Automatic water temperature control

Double filter system

Supporting roller adjustable outside

With squeezing roller system



## Haul-Off

Servo motor directly driven for each caterpillar

Longer effective length caterpillar with two tensioners for each

With forward and backward function

PLC control

## Fiberglass Wrapping Machine

Core winding design with special fusion technology and air-cooling system

PLC control



## Extruder for Outer Layer





Pushing boundaries

**THANK YOU  
FOR TAKING THE  
TIME  
TO BROWSE  
THROUGH OUR  
BROCHURE.**

We would be glad to hear your requirements. Contact us. We look forward to working with you.

**Banline - RTP**  
Owen.chen@banline.com  
www.banline.com



Welcome

## Cooling System for Outer Layer

Vacuum tank

Spray Cooling Tank

Haul-off



## Planetary Cutting Saw

Hydraulic feeding saw cutting.

Universal clamp device.

With exhausting device.

PLC control.

## Butt Weld + Enhanced Sleeve Joining



## Electrothermal Joining

for low pressure RTP pipe



# Reliability Matters

We always put our faith on our customers, concentrate on a high-quality level with competitive technology, do our best to meet customer needs.







## 1 st

-By using brand new wrapping technology.

## 1 only

-Could make OD: DN 315 ~ DN630 all around the world.

## 12 MPa

-Working pressure for lower diameter with high pressure.

## DN 125

-Coilable diameter.